



**SRT-Legacy Connector Advisory Group
Meeting Recap**

July 21, 2022

The Legacy Connector Advisory Group met virtually to review updates and progress on the design and engineering of the trail connection. In addition to members of the group, the meeting was attended by members of the design and engineering team and representatives of Verdae Development, Inc (VDI).

The design and engineering team presented an overview of the process to-date, the project's design principles, and reminder of the site's existing conditions and challenges. The site breaks down into 4 zones: west of the SRT; creek corridor; woodland area; and Legacy Park. Each zone has unique site constraints and opportunities, such as steep topography, habitat, floodway, wetlands, trees, and formal programming.

Building on the group's review and discussion of alignment alternatives at the prior meeting, the design and engineering team presented the preferred alignment that considers the input of the Advisory Group as well as technical and design factors. The group reviewed and discussed in detail many aspects of the alignment including the connection to existing park trails, a new multi-use sidewalk along Algonquin Trail, intersections with trails around Algonquin Pond, coordination with current park uses and programs, mitigating any impact on existing trees, and ensuring the health and stability of trees during construction.

The group also discussed the design of an intimate entrance area at Algonquin Trail and Broadwell, a new programmable plaza on the westside of the SRT, preferences for lighting using environmentally friendly "dark sky" fixtures that are sensitively integrated while supporting comfort and safety, plantings that are native and hardy, and surface materials such as asphalt, concrete, and decomposed granite that are universally accessible, durable, comfortable, and fit into the look and feel of the landscape.

Over the next few months, the team will continue to develop the design and engineering of all aspects of the connector, engage relevant property owners in discussions for project support, continue discussions with the city regarding maintenance and ownership, begin the permitting process, and engage a construction team. The group will meet again in the coming few months to review updates to more design and engineering details.



SRT-Legacy Connector Design Principles

Create an active and inclusive trail connection:

facilitating circulation between Legacy Park, the Green Line of the Prisma Health Swamp Rabbit Trail, and Verdae Commons.

Enhance community life and well-being:

providing meaningful connections, enhanced experiences of nature, and recreational opportunities.

Establish fully accessible pedestrian and bike connections:

creating a trail that supports residents and visitors of all abilities and needs.

Support comfortable, user-friendly access and wayfinding:

ensuring ease of use for both pedestrians and bikes with clear navigation promoting safety and security.

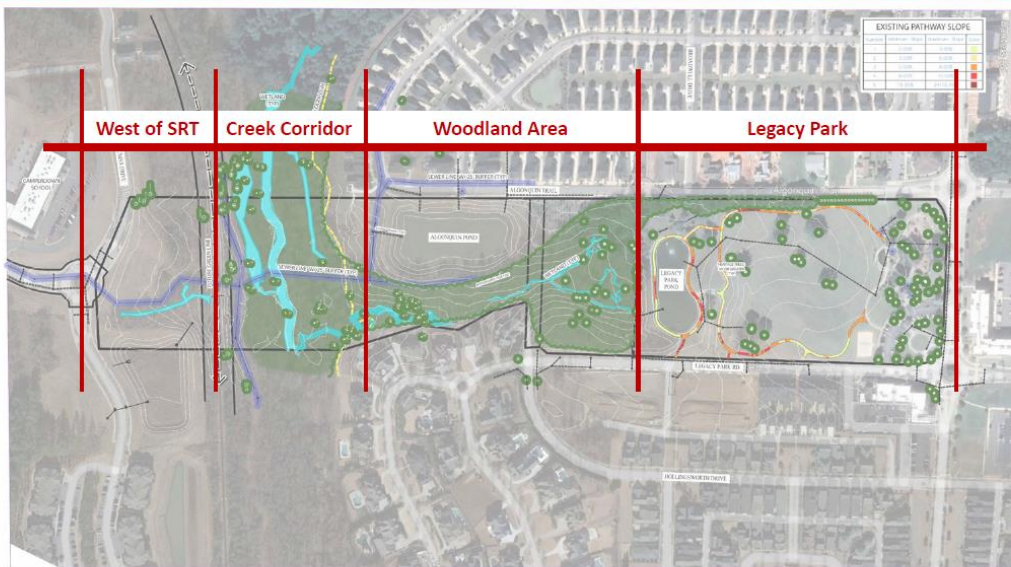
Balance access and connectivity with minimal impacts:

addressing views, lighting, security, and privacy of nearby residential neighborhoods.

Implement sustainable environmental and cost strategies:

responding to slopes, floodplains, and natural environments with durability and maintenance of construction to achieve the master plan vision.

Site Segments



Connector Alignment *(Subject to Change)*



CONCEPTUAL SITE PLAN
GREEN LINE OF THE PROPOSED HOUSING DEVELOPMENT
VERDAE GREENVILLE, NC
NOV 2023

VERDAE
BEYER BLINDER BELLE Kimley-Horn